

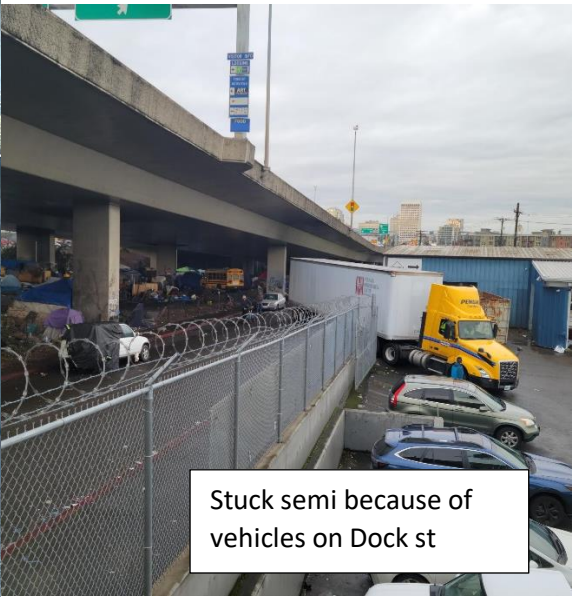
Vehicles blocking Dock st



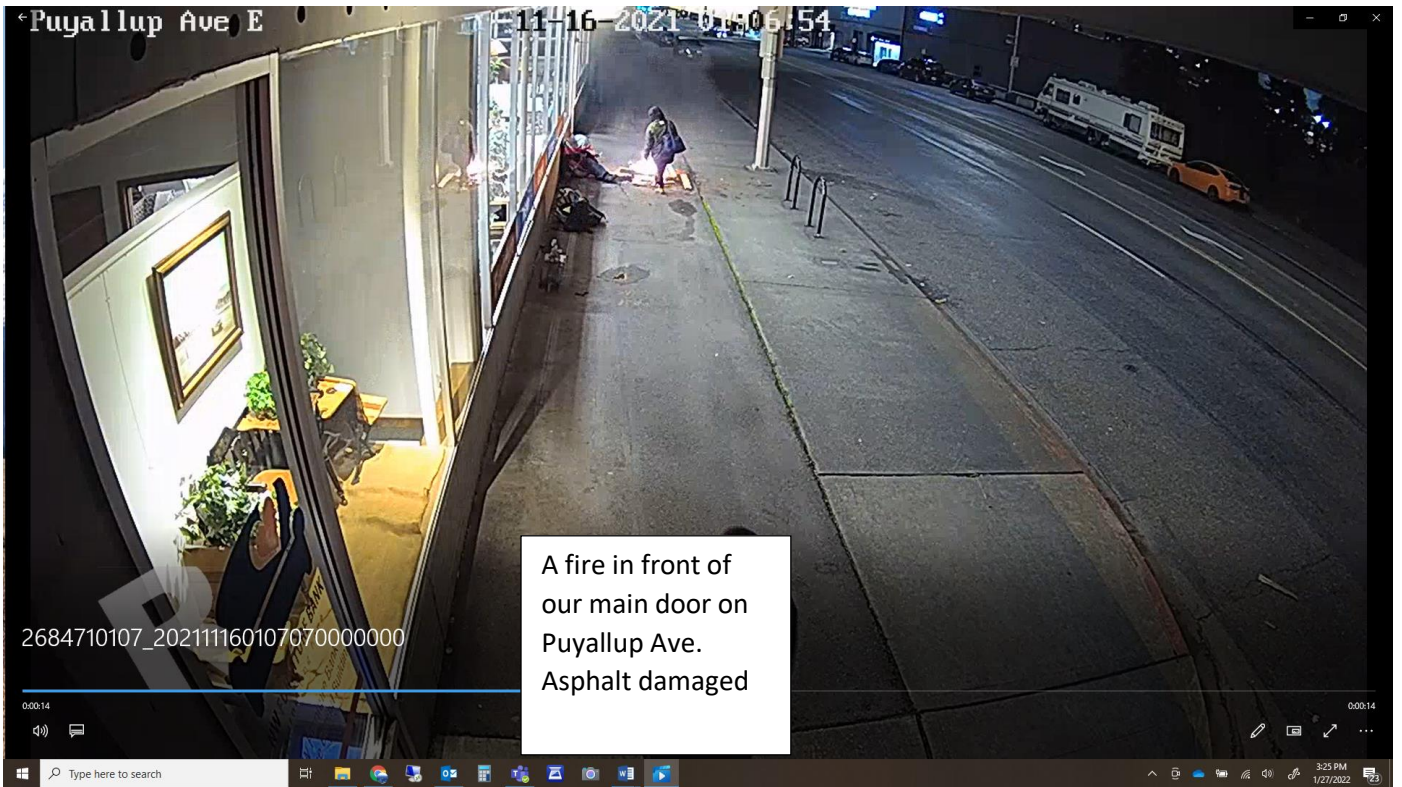
2<sup>nd</sup> fire on 1/27/22



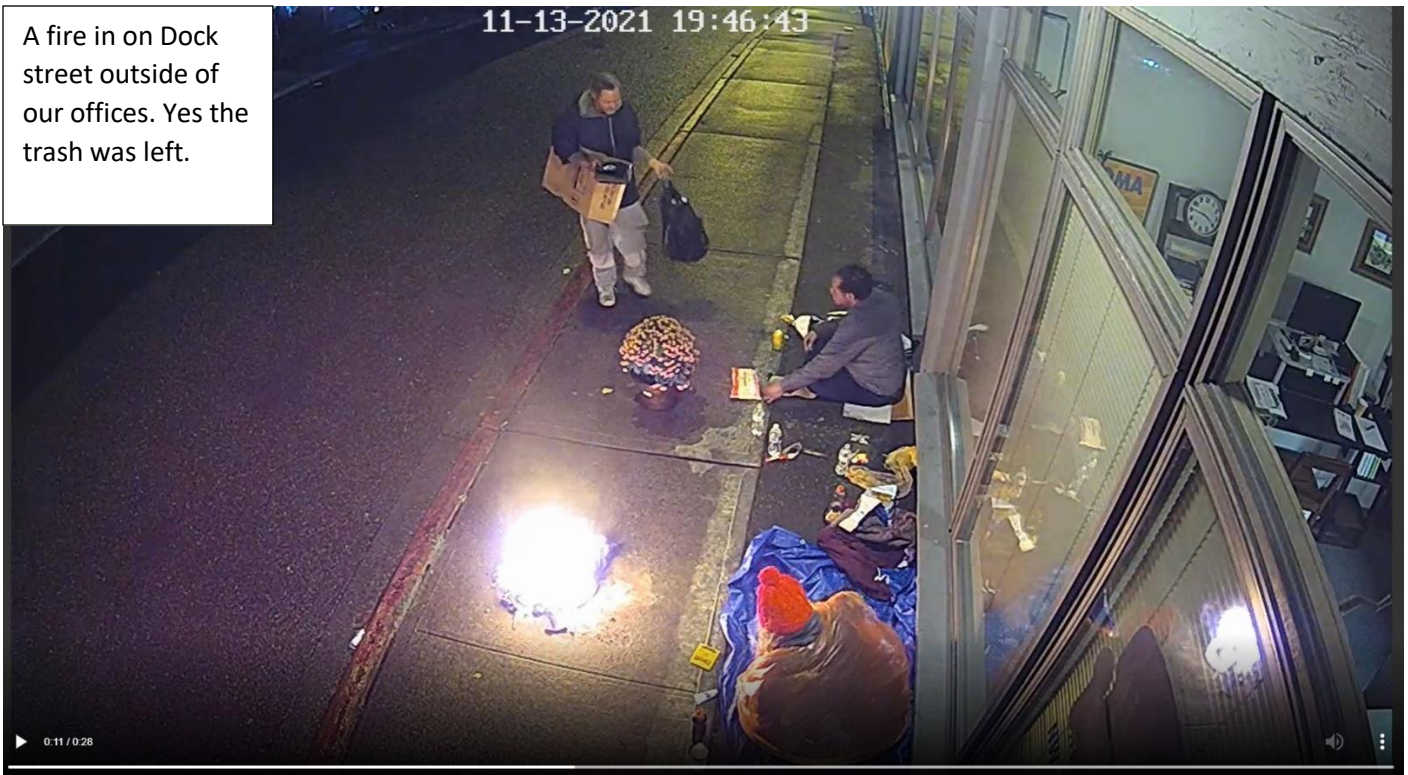
1st fire on 1/27/22



Stuck semi because of vehicles on Dock st



A fire in front of  
our main door on  
Puyallup Ave.  
Asphalt damaged



A fire in on Dock  
street outside of  
our offices. Yes the  
trash was left.