

Safely dump your sewage!



Free RV dump stations

Sumner Sewage Treatment Plant

13114 63rd St. E.
Sumner, WA 98390
(253) 299-5760

76 Gas Station

234 Bravo Terrace SE
Port Orchard, WA 98367
(360) 895-1109

LOTT's Budd Inlet Treatment Plant

500 Adams St. NE
Olympia, WA 98501
(360) 664-2333

*Dump station is on Franklin Street.
Open Monday–Friday,
8 a.m.–5 p.m.*

I-5 mile 140 Rest Area

Federal Way, WA



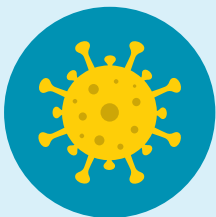
Tacoma-Pierce County

Health Department

Healthy People in Healthy Communities

Wastewater can make you sick.

Don't dump wastewater on the ground, in a ditch, down a storm drain, or in a body of water.



Contains harmful bacteria and viruses.



Harms water quality, plants and animals.



Attracts insects and other pests that spread disease.



Contaminates shellfish that people harvest and eat.



Questions?

Visit tpchd.org/surfacewater
or call (253) 649-1925.